

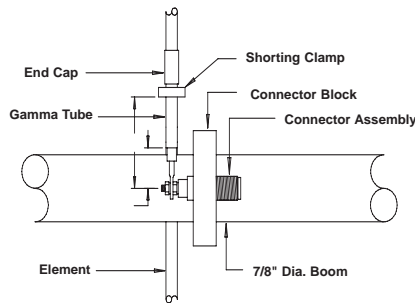
## UHF & 800/900 YAGIS

1. Each antenna comes factory tuned to the center of the band, no further tuning should be necessary.
2. To tune to a different frequency or to check the tuning: BEFORE INSTALLATION, set the antenna up in a clear area and insert a VSWR indicator (through-line wattmeter) into the line. If the reflected power is too high, the gamma match must be adjusted. First, adjust the gamma tube for a minimum reflected power reading. Next, adjust the shorting clamp for minimum reflected power. In order to reduce the VSWR to zero, several runs of adjusting the tube first, then the shorting clamp, may have to be made.
3. Mount the antenna on a mast or tower per mount instructions.

### NOTES:

It is recommended that in vertically polarized installations, the gamma match capacitor tube cap is "up".

### GAMMA MATCH



### CAUTION AND WARNING!

**YOU COULD BE KILLED IF THIS ANTENNA COMES IN CONTACT WITH ELECTRIC POWER LINES OR IS BROUGHT IN PROXIMITY WITH A HIGH VOLTAGE ELECTRICAL FIELD. FOR YOUR OWN SAFETY USE EXTREME CAUTION WHEN INSTALLING THIS ANTENNA. KEEP AWAY FROM POWER LINES.**

## PRODUCT WARRANTY

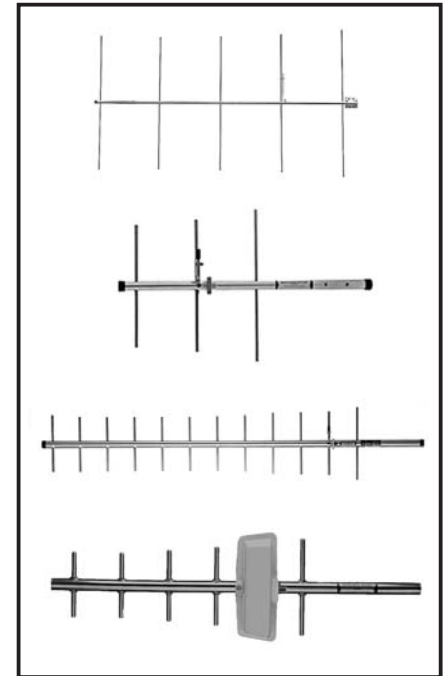
WARRANTY. PCTEL, Inc. ("PCTEL") represents and warrants that the Products furnished hereunder shall be free from defects in material and workmanship for a period of two (2) years (except for MPRC and MPRD parabolic reflector antennas, and Bluewave series antennas, which are warranted for five (5) years) from the date of shipment by PCTEL under normal use and operation. PCTEL's sole and exclusive obligation under the foregoing warranty shall be, at its option, to repair or replace any defective Product that fails during the warranty period. The expense of removal and reinstallation of any item is not included in this warranty. THE FOREGOING WARRANTY IS EXCLUSIVE AND IN LIEU OF ALL OTHER WARRANTIES, EXPRESS OR IMPLIED, INCLUDING THE IMPLIED WARRANTIES OF MERCHANTABILITY AND FITNESS FOR A PARTICULAR PURPOSE AND ANY WARRANTIES ARISING FROM A COURSE OF DEALING, USAGE OR TRADE PRACTICE WITH RESPECT TO THE PRODUCTS. Repair or replacement in the manner provided herein shall be the sole and exclusive remedy of Buyer for breach of warranty and shall constitute fulfillment of all liabilities of PCTEL with respect to the quality and performance of the Product. PCTEL shall have no obligation to make repairs or replacement necessitated by catastrophe, fault, negligence, misuse, abuse, or accident by Buyer, Buyer's customers or any other users. PCTEL DOES NOT WARRANT THAT THE OPERATION OF THE PRODUCTS IS ERROR-FREE OR THAT OPERATION WILL BE UNINTERRUPTED. IN NO EVENT SHALL PCTEL BE RESPONSIBLE FOR DAMAGES OR CLAIMS OF ANY NATURE OR DESCRIPTION RELATING TO: (i) SYSTEM PERFORMANCE, INCLUDING COVERAGE; (ii) BUYER'S SELECTION OF PRODUCTS FOR BUYER'S APPLICATION; AND/OR (iii) FAILURE OF PRODUCTS TO MEET GOVERNMENT OR REGULATORY REQUIREMENTS. The foregoing warranty shall apply only if: (i) the Product has been properly installed and used at all times in accordance, and in all material respects, with the applicable Product documentation; (ii) no modification, alteration or addition has been made to the Product by persons other than PCTEL or PCTEL's authorized representatives or otherwise approved by PCTEL; and (iii) the Product has not been subjected to misuse, neglect or unusual physical, electrical or electromagnetic stress, or some other type of accident.

WARRANTY PROCEDURES: In the event of a warranty claim, Buyer must contact PCTEL to arrange for Product return. No Product will be accepted for replacement or repair without first obtaining a Return Material Authorization (RMA) number from PCTEL Customer Service by telephone: 630.372.6800 or email: antenna.techsupport@pctel.com. PCTEL reserves the right to inspect all defective Products. Product returned without an RMA number will not be processed and will be returned to Buyer freight collect. The warranty period of any repaired or replaced Product shall not extend beyond its original term. Equipment to be repaired or replaced under warranty is to be returned, freight prepaid, to the following address with the assigned RMA number quoted on the box:

**PCTEL, Inc., Attn: RMA Coordinator**  
471 Brighton Drive  
Bloomington, Illinois 60108 U.S.A.



**471 Brighton Drive**  
**Bloomington, Illinois 60108**



## UHF & 800/900 MHz YAGI INSTALLATION INSTRUCTIONS

© 2008 PCTEL, Inc. All rights reserved.

Part # MIS-UHF800YGI-2 Rev. A  
Printed in the U.S.A.