



PCTEL - WHEN IT MATTERS

ANTENNAS FOR PUBLIC SAFETY AND EMERGENCY RESPONSE

OUR OFFERING

- Extensive antenna selection operating on all major frequency spectrums used in Critical Communications applications worldwide
- Wideband and Multiband antennas that support inter-operability for improved dispatch and operational efficiencies
- No tune mobile and base station antenna designs for faster and cost-efficient installations
- A wide variety of GPS enabled antennas for asset tracking applications
- Environmentally tested platforms for long lasting, reliable performance under severe weather and operating conditions
- A wide variety of antenna mounts and ancillary products for optimal system performance
- Antenna platforms designed and qualified by the top Public Safety radio manufacturers in the world

OUR CAPABILITIES

- Manufacturing locations in the USA and Asia
- Dedicated network authorized PCTEL distributors to satisfy the public safety requirements of the European market
- Top of the line Stargate 24 near-field antenna test ranges with anechoic chambers
- High fidelity 3D electromagnetic simulation and mechanical design software tools
- In-house environmental test facilities



APPLICATIONS

- Public Safety
- Emergency Response
- Fleet Management
- GPS Asset Tracking
- MIMO and Mesh Networks
- In-Building Coverage
- Base Station Repeaters
- Digital and Analog Networks
- Mobile Data
- Video Streaming
- Mobile Data Backhaul
- Wireless Security Systems



ANTENNAS FOR PUBLIC SAFETY



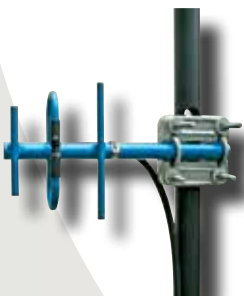
VEHICULAR ANTENNAS

- TETRA, GSM, 3G/4G
- Multiband Designs
- No Ground Plane Options
- WiFi Dual-Band MIMO
- GPS and GLONASS enabled



IN-BUILDING ANTENNAS

- TETRA, GSM, 3G/4G
- Multiband Designs
- MIMO and Mesh Networks
- Ceiling/Wall/Mast Mount



BASE STATION ANTENNAS

- TETRA, GSM, 3G/4G
- Wideband & Multiband
- Directional & Omnidirectional
- WiFi Broadband Wireless
- Various Mount Options



ANCILLARY ACCESSORIES

- NEMA Rated Enclosures
- Bulk Cable
- Custom Cable Assemblies
- Surge Suppression

PRODUCT SELECTION MATRIX FOR 700 MHZ 4G LTE (698 MHZ - 2170 MHZ)

Product Series comprise various models. Not all models offer all available features. For technical details, refer to PCTEL catalog.	Features														Applications														
	Unity Gain Models	Gain Models	Narrow Band, Field Tuning Required	Narrow Band, Factory Tuned	Wideband, No Field Tuning Required	Wideband, Field Tuning Required	Ground Plane Required	No Ground Plane Required	Requires Separate Mount Assembly	Mount Integrated to Antenna**	Lowband or VHF (27 MHz - 174 MHz)	TETRA (350-430 MHz)	UHF (406 MHz - 697 MHz)	700 MHz Public Safety (698 MHz - 960 MHz)	800 MHz SMR/Cellular, 900 MHz ISM, GSM	PCS, GSM, 3G (850 MHz - 2200 MHz)	Broadband Access (2.2 - 6 GHz)	MIMO (Multiple Input, Multiple Output)	Multiband, Multi-Frequency	GPS L1, L2/High Rejection LNA Available	MIL-STD-810F Compliance	Vehicular Installations	Vehicular Covert Installations	Fleet Management / Asset Tracking	Mobile Broadband Access (Data & Video)	In-Building Coverage	Outdoor Base Station Installations	Portable Hand Held Devices	
Multiband LMR Antenna (PCTWSLMR)	X				X	X		X		X	X	X	X	X				X		X		X			X				
GPS L1 Antennas (GPS-NMO, 32XXMSMA, WS39XX)		X		X				X	X	X										X	X	X							
Smart GPS Antennas with USB or RS232 Interface (5012D-U, PCTMDL-RCVR)								X										X	X	X		X		X					
Chrome Coil Low Profile Base (MUF)		X	X	X			X		X		X	X		X	X						X	X						X*	
Chrome Coil Wideband No Tune (MWU, MWV)	X	X			X		X	X	X		X	X									X	X						X*	
Chrome Coil Wideband Field Tune (MWV, MWB, ASPR)	X	X				X	X	X	X		X	X									X	X						X*	
Chrome Coil Dual Band VHF/UHF (MDB)		X		X			X		X		X							X			X	X						X*	
Chrome Coil Lowband (MLB)	X		X				X		X												X	X						X*	
Chrome Coil Base Loaded (MHB/MUF)	X	X	X				X	X	X		X	X									X	X						X*	
Chrome Coil (MUFXXNGP)	X	X	X	X			X	X			X		X	X	X						X	X						X*	
Low Profile Vertical (MLPV)	X	X			X		X		X		X	X	X	X	X	X		X			X	X		X	X	X	X	X	X
No Ground Plane Low Profile Vertical (MLPVXXNGP)	X	X			X		X	X					X		X						X	X		X	X	X	X	X	X
5012D-U																													
Covert Antennas (39XXD)		X			X		X		X				X	X	X					X	X	X	X	X	X				
Silhouette Low Profile Transit (ASP)	X			X			X		X	X		X	X	X							X	X						X	
High Performance Low Profile (PCTHP, GPSHP, PCTMDL, GPSGSM)		X			X		X		X			X	X	X	X	X	X	X	X	X	X	X	X	X	X	X	X	X	X
Quarter Wave Antennas (PCTCN, MLB)	X		X	X			X		X		X	X	X	X							X	X						X*	
Molded Base Antennas (BMAX, ASP, MN, PCTCN)	X	X	X	X	X		X		X		X	X	X	X	X	X		X			X	X		X				X*	
Elevated Feed Point (MEFC, MUF, PCTP)	X	X		X	X		X	X				X	X	X		X					X	X		X			X		
Magnetic Base (ASPRDM)		X		X			X		X				X	X				X			X	X							
Glass Mount (ASPDM, APDM)		X			X		X		X		X		X					X			X	X							

X* if installed in conjunction with MBS Base Station mobile antenna adapter ** Mount may be included or sold separately

Features															Applications												
Product Series comprise various models. Not all models offer all available features. For technical de- tails, refer to PCTEL catalog.	Unity Gain Models	Gain Models	Narrow Band, Field Tuning Required	Narrow Band, Factory Tuned	Wideband, No Field Tuning Required	Wideband, Field Tuning Required	Ground Plane Required	No Ground Plane Required	Requires Separate Mount Assembly	Mount Integrated to Antenna	Lowband or VHF (27 MHz - 174 MHz)	UHF (406 MHz - 697 MHz)	700 MHz Public Safety (698 MHz - 960 MHz)	800 MHz SMR/Cellular, 900 MHz ISM, GSM	PCS, GSM, 3G (850 MHz - 2170 MHz)	Broadband Access (2.2 - 6 GHz)	MIMO (Multiple Input, Multiple Output)	Multiband, Multi-Frequency	GPS L1, L2/High Rejection LNA Available	Environmental Compliance	Vehicular Installations	Fleet Management / Asset Tracking	Mobile Broadband Access (Data & Video)	In-Building Coverage	Outdoor Base Station Installations	Portable Hand Held Devices or Access Points	
	Ceiling Mount MIMO (PCTCMI)	X			X			X		X						X	X	X		UL 94-V0 CL2P Cable				X			
Above Ceiling Mount (UFO, UHF)		X		X			X	X							X	X	X		UL 94-V0 CL2P Cable				X				
Ultra-Wideband Ceiling Mount (PCTCMB)		X		X			X		X	X	X	X	X	X	X		X		UL 94-V0				X				
Low Profile Ceiling Mount (MC Series)		X		X			X		X						X		X		UL 94-V0 CL2P Cable				X				
Low Profile AP Enclosure Antenna (WMLPVI)		X		X		X			X						X		X		UL 94-V0 CL2P Cable				X				
Portable Blade (MPA)		X		X			X		X*			X	X	X	X		X		UL 94-V0				X		X		
Wall Mount MIMO Directional Panels (MPMI, FP2458)		X		X			X	X							X	X	X		UL 94-V0 CL2P Cable				X	X			
Wall Mount Diversity Directional Panel (MPDD)		X		X			X	X							X	X	X		UL 94-V0 CL2P Cable				X	X			
Directional Panels (MP, FP)		X		X			X	X	X			X	X	X	X	X	X		UL 94-V0 CL2P Cable				X	X			
Fiberglass Omnidirectional (MFB Series)		X		X			X	X		X	X	X	X	X	X		X							X			
Carrier Grade Omnidirectional (BOA Series)		X		X			X	X		X				X	X									X			
Sector Panels (SP, SPVL, MSP)		X		X			X		X						X		X							X			
Directional Yagi Antennas (BMYD, BGYD, BMOY, MYA, MYP)		X		X			X	X		X	X	X	X		X									X			
Parabolic Reflectors (MPRC, MPRD)		X		X			X		X						X									X			
Ancillary Products																											
NEMA Enclosures:	• Recessed Ceiling Tile			• Wall Mount			• Mast or Surface Mount			• Temperature Controlled			• Intrinsically Safe			• Metallic and Non-Metallic			• Indoor and Outdoor			• Ancillary Accessories			• Customization Available		
Bulk Cable	• PFP100A, PFP195			• PFP240			• PFP400, PFP600			• 100% Bonded Aluminum Foil			• 50 ohm impedance			• Tinned Copper Braid - CuSn			• Polyethylene Jacket			• Flame-retardant PVC			• Customization Available		
Accessories	• Surge Suppressors			• Mounting Brackets			• Tools			• Adapters			• Custom Cable Assemblies														