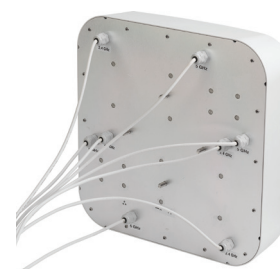


VenU® Dual-Band, Dual-Polarization, 802.11 ac 8-Port Sector Antennas

These dual-band, 8-port sector antennas can be used for 802.11ac MIMO applications. The antennas cover both 2.4-2.5 GHz and 5.1-5.9 GHz in one radome. The radome is constructed from lightweight, durable, UV-stable plastic. The eight elements can also be used individually or in combination with legacy 802.11 access points.



Features

- UL listed radome and PC board materials conform to UL's high burn flame retardant rating, for added installation flexibility
- Attractive, low-profile housing blends well with indoor and outdoor environments where aesthetic considerations are important
- Articulating mount included

STANDARD CONFIGURATION

Model	Cable	Connector	Mounting Method:
FPMI2458-DP806NM	Eight 58-inch +/-2 RG-58PLW Plenum	N Male	Adjustable mounting bracket for wall or pipe mount included.
FPMI2458-DP812NM	Eight 58-inch +/-2 RG-58PLW Plenum	N Male	Adjustable mounting bracket for wall or pipe mount included.
FPMI2458-DP810NM	Eight 58-inch +/-2 RG-58PLW Plenum	N Male	Adjustable mounting bracket for wall or pipe mount included.

ELECTRICAL SPECIFICATIONS - RF ANTENNA

Model	Frequency Range	Typical Gain	Peak Gain	Vertical Beamwidth	Horizontal Beamwidth	Maximum Power	Nominal Impedance
FPMI2458-DP806NM	2.4-2.5 GHz / 5.1-5.9 GHz	6.5 dBi / 5.5 dBi	7.5 dBi / 6.5 dBi	43° / 37°	31° / 29°	25 watts	50 ohms
FPMI2458-DP812NM	2.4-2.5 GHz / 5.1-5.9 GHz	12 dBi / 11 dBi	13 dBi / 12 dBi	43° / 37°	31° / 29°	25 watts	50 ohms
FPMI2458-DP810NM	2.4-2.5 GHz / 5.1-5.9 GHz	10 dBi / 6 dBi	10.5 dBi / 7.5 dBi	44° / 43°	51° / 53°	25 watts	50 ohms

ELECTRICAL SPECIFICATIONS - RF ANTENNA, continued

Model	Polarization	VSWR	Front-to-Back Ratio	Front-to-Side Ratio
FPMI2458-DP806NM	Dual linear	< 2.25:1	> 22 dB @ 2.4 GHz / > 25 dB @ 5 GHz	17 dB @ 2.4 GHz / 15 dB @ 5 GHz
FPMI2458-DP812NM	Dual linear	< 2.25:1	> 22 dB @ 2.4 GHz / > 25 dB @ 5 GHz	17 dB @ 2.4 GHz / 15 dB @ 5 GHz
FPMI2458-DP810NM	Dual linear	< 2.25:1	> 21 dB @ 2.4 GHz / > 23 dB @ 5 GHz	15 dB @ 2.4 GHz / 14 dB @ 5 GHz

MECHANICAL & ENVIRONMENTAL SPECIFICATIONS

Dimensions	Weight	Housing Material	Rated Wind	Temperature Range
12 L x 12 H x 4.3 D in (30.5 x 30.5 x 11 cm)	5 lbs (2.27 kg)	White, UL 94 HB plastic	125 mph	-22°F to +176°F (-30°C to +80°C)