

TEMPLATE DRAWING IS FOR REFERENCE ONLY  
VERIFY TEMPLATE IS TO CORRECT SCALE  
PRIOR TO MARKING AND CUTTING HOLES

ASPB574/ASPC754 series

## VHF OMNI-DIRECTIONAL TRANSIT ANTENNA

# The Linebacker®

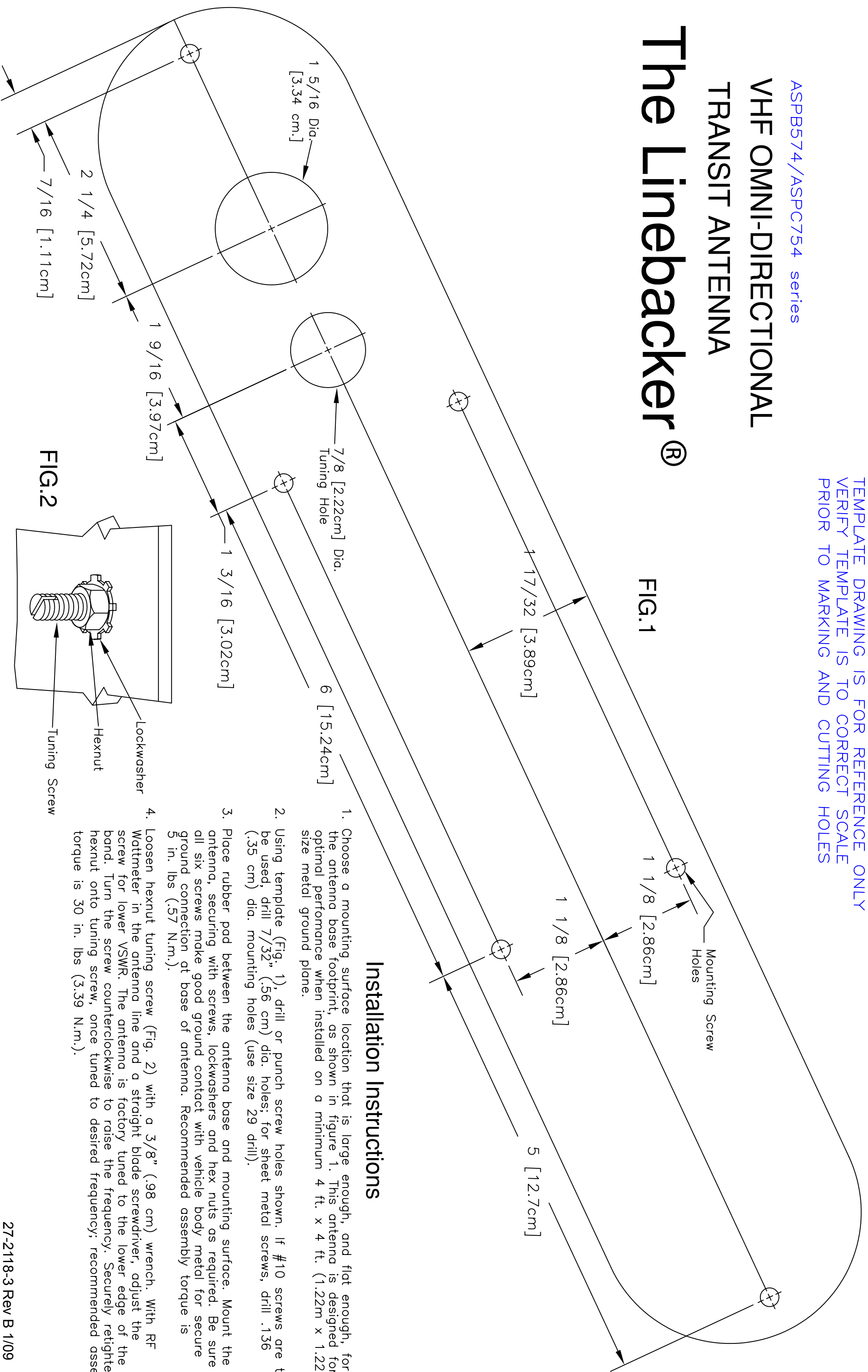


FIG.1

FIG.2

### Installation Instructions

1. Choose a mounting surface location that is large enough, and flat enough, for the antenna base footprint, as shown in figure 1. This antenna is designed for optimal performance when installed on a minimum 4 ft. x 4 ft. (1.22m x 1.22m) size metal ground plane.
2. Using template (Fig. 1), drill or punch screw holes shown. If #10 screws are to be used, drill 7/32" (.56 cm) dia. holes; for sheet metal screws, drill .136 (.35 cm) dia. mounting holes (use size 29 drill).
3. Place rubber pad between the antenna base and mounting surface. Mount the antenna, securing with screws, lockwashers and hex nuts as required. Be sure all six screws make good ground contact with vehicle body metal for secure ground connection at base of antenna. Recommended assembly torque is 5 in. lbs (.57 N.m.).
4. Loosen hexnut tuning screw (Fig. 2) with a 3/8" (.98 cm) wrench. With RF Wattmeter in the antenna line and a straight blade screwdriver, adjust the screw for lower VSWR. The antenna is factory tuned to the lower edge of the band. Turn the screw counterclockwise to raise the frequency. Securely retighten hexnut onto tuning screw, once tuned to desired frequency; recommended assembly torque is 30 in. lbs (3.39 N.m.).