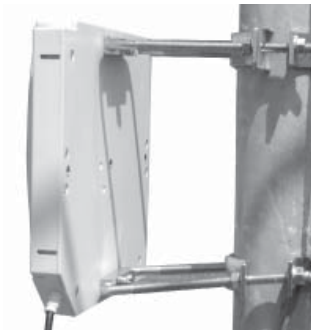




MP series antenna



MP8066XFPT on MPAB12 mount



MP8066XFPT on MPAB8 heavy duty bracket



800/900 MHz Directional Panel Antennas

These directional panel antennas are designed to cover 800/900 MHz frequencies with a VSWR of less than 1.5:1, obtaining maximum gain with an attractive, low-profile package. All models provide efficient and stable performance across the band and can be mounted indoors or outdoors.

Features

- Highly efficient antenna element provides high performance in an attractive, compact housing.
- UL94-V0 plastic and PC board. Provides UL's high flame retardant rating allowing maximum placement flexibility. Meets stringent building fire rating codes.
- Attractive, low profile housing. Blends well with indoor and outdoor environments where aesthetic considerations are important.
- Corner exit RG-58/U pigtail design. Permits the linear polarized panel to be mounted in vertical or horizontal polarity with a wide variety of connectors.
- Optional UL 910 rated Plenum cable. Allows the cable to be installed in the strictest indoor mounting locations, including air ducts.
- Optional adjustable mounting brackets for indoor and outdoor mounting. Provide maximum flexibility for indoor or outdoor installations.

Technical Data

| |
|---|
| Maximum Power Input: 20 watts |
| Polarization: Linear, vertical/horizontal (all models but MP9026CPLXFPT and MP9026CPRXFPT) Left hand circular (MP9026CPLXFPT only) Right hand circular (MP9026CPRXFPT only) |
| Nominal Impedance: 50 ohms |
| VSWR: < 1.5:1 |
| Radome Material: UL 94-V0 plastic |
| Cable: 12" (30.5 cm) RG-58/U (UL910 rated cable optional) |
| Connector: N female |
| Mounting Options: MPAB11 short adjustable indoor mount MPAB7 heavy duty outdoor adjustable mount with +/-35° uptoilt/downtilt adjustment MPAB8 heavy duty outdoor adjustable mount with 17° uptoilt/downtilt adjustment |

For detailed specifications, visit <http://antenna.pctel.com>.

Antenna Electrical Specifications

| Model | Frequency Range | Gain | 3 dB Horizontal Beamwidth | 3 dB Vertical Beamwidth | Front-to-Back Ratio |
|-----------------|-----------------|----------|---------------------------|-------------------------|---------------------|
| MP8066XFPTNF | 806-960 MHz | 6 dB | 70° | 60° | > 17 dB |
| MP9027XFPTNF | 902-928 MHz | 7 dB | 65° | 65° | > 17 dB |
| MP9026CPLXFPTNF | 902-928 MHz | 6.4 dBdc | 65° | 65° | > 20 dB |
| MP9026CPRXFPTNF | 902-928 MHz | 6.4 dBdc | 65° | 65° | > 20 dB |

Mechanical Specifications

| Model | Dimensions | Weight (Mass) | Temperature Range | Wind Loading (Frontal) @ 100 mph Wind |
|-----------------|---|-------------------|-------------------|--|
| MP8066XFPTNF | 8.8" x 8.1" x 1.6" (22.4 x 20.6 x 4.06 cm) | 1.2 lbs (0.54 kg) | -40°C to +70°C | 27.9 lbs |
| MP9027XFPTNF | 8.8" x 8.1" x 1.6" (22.4 x 20.6 x 4.06 cm) | 1.2 lbs (0.54 kg) | -40°C to +70°C | 27.9 lbs |
| MP9026CPLXFPTNF | 8.8" x 8.1" x 1.6" (22.4 x 20.6 x 4.06 cm) | 1.2 lbs (0.54 kg) | -40°C to +70°C | 27.9 lbs |
| MP9026CPRXFPTNF | 8.8" x 8.1" x 1.6" (22.4 x 20.6 x 4.06 cm) | 1.2 lbs (0.54 kg) | -40°C to +70°C | 27.9 lbs |